



For Price Information email  
[jimmyharston@yahoo.com](mailto:jimmyharston@yahoo.com)  
or call 270-646-3199

### PINE RIDGE ESTATES LOCATION:

85 Secrest Lane,

Scottsville, KY 42164

1.5 Hours South of Louisville

1 Hour North of Nashville

Centrally located between  
Louisville and Nashville off US 31-E  
and convenient to I-65



### Pine Ridge Estates

Located only 5 minutes from the Barren River State Park

**Barren River Lake State Resort Park** is a water-lover's paradise surrounded by forested rolling hills. The resort is located just a short drive from Kentucky's famous cave area, which includes Mammoth Cave National Park, the longest cave system in the world!

#### Park Features & Recreational Facilities

**Louie B. Nunn Lodge** – Surrounded by rolling, tree covered hills, the lodge overlooks the beautiful 10,000 Acre Lake. The lodge has rooms with lake facing balconies and offers full amenities or try out a 2 bedroom, 2 bath cabin or upgrade to a villa with a gas fireplace.

**Camping** – Let the sounds of the outdoors lull you to sleep. Utility hook ups are available. For your camping convenience, a dump station and two central service buildings with showers and rest rooms are offered.

**Dining** – Enjoy the cuisine at the Driftwood Restaurant or have a cocktail at the Highland Pub located in the Louie B. Nunn Lodge.

**Boating** – Barren River Lake provides endless hours of entertainment for the boating enthusiast. The Marina has a launching ramp, and rentals for fishing boats, pontoons, and houseboats. Open year round.

**Fishing** – Barren River Lake is unsurpassed for fishing pleasure. With an abundance of largemouth, white, and hybrid striped bass, bluegill, channel catfish, crappie, and rough fish, you are sure to get a bite!

**Golf** – Enjoy a “par”fect day on the 18-hole, regulation golf course. A fully equipped pro-shop, riding carts, and rental clubs are available. Course open year round, weather permitting.



#### “The Perfect Location”

Pine Ridge Estates is only five minutes from the Barren River State Park, and 15 minutes from Glasgow, KY with nearby access to great shopping and quality medical facilities. This area has a nearly perfect climate and temperature. It stays cool in the summer and mild in the winter. An added attraction is the low cost of living.



The wooded lots at Pine Ridge Estates allow you to enjoy the beauty of all four seasons. They also give you the privacy that you desire for your weekend or retirement home.



## KENTUCKY LAKEFRONT PROPERTIES

# Pine Ridge Estates

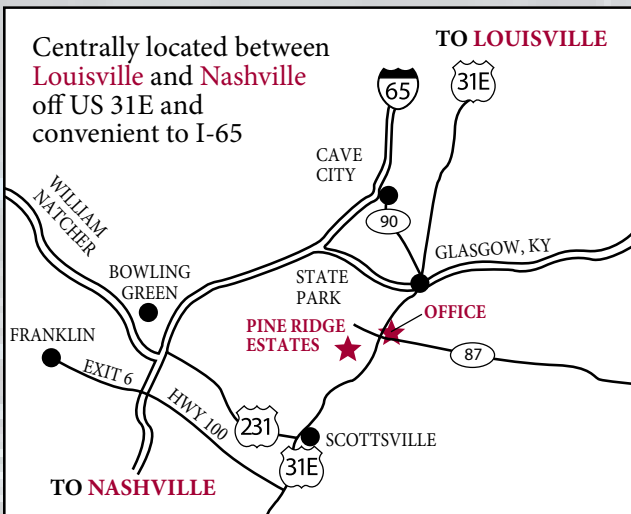
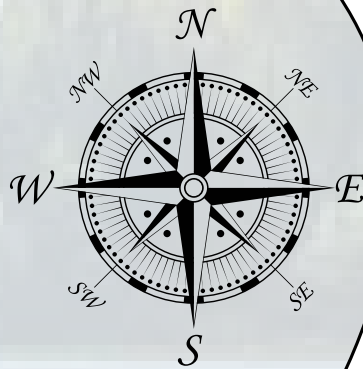
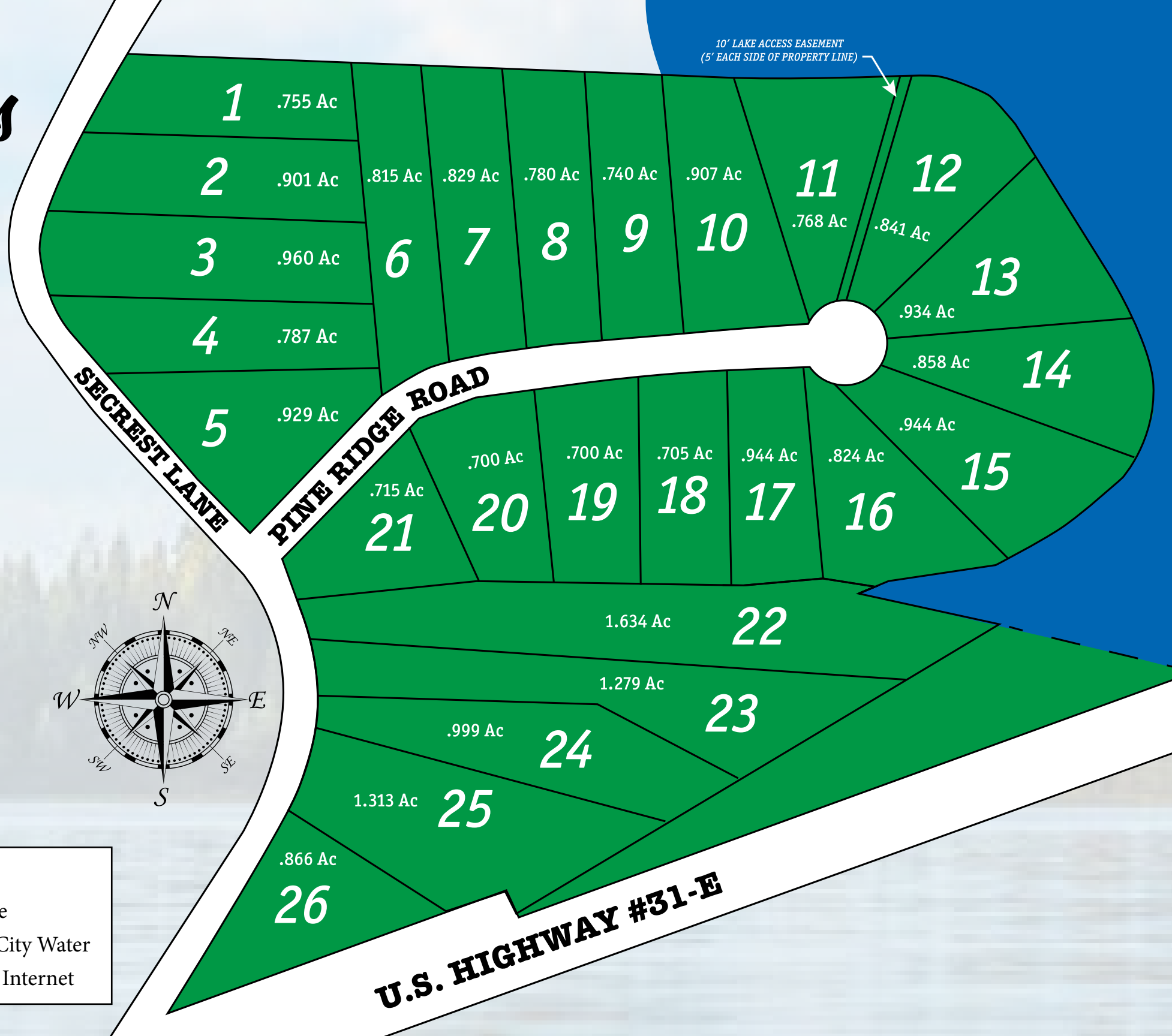
Office 270-646-3199 (Days 8 am - 4:30 pm)  
270-622-8500 (Evenings)  
[www.barrenlake.com](http://www.barrenlake.com)

No required time to start building  
**DEVELOPERS**

Chad Harston Cell 270-622-8500  
Jimmy Harston



# Pine Ridge Estates



- ### AMENITIES
- Beautiful Stone Entrance
  - Underground Utilities, City Water
  - High Speed Fiber Optic Internet